

LEWISBURG BOROUGH

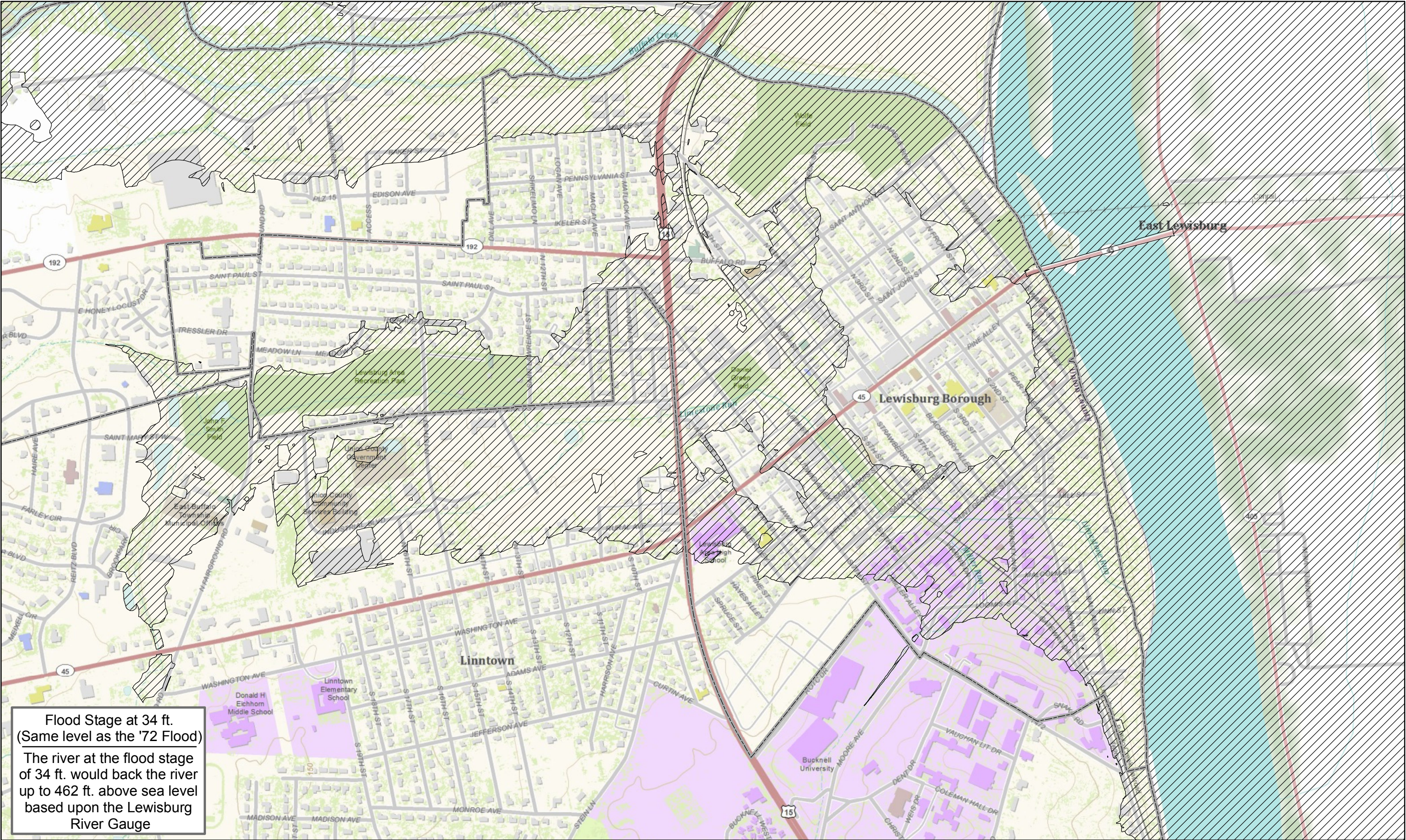
Union County, Pennsylvania

34' FLOOD STAGE



- Approximate flood stage level
- Municipal Boundary

One inch represents approx. 1,000 feet
or
1 : 12,000
Prepared by Union County GIS Department: October 2011



Flood Stage at 34 ft.
(Same level as the '72 Flood)

The river at the flood stage of 34 ft. would back the river up to 462 ft. above sea level based upon the Lewisburg River Gauge